



# AxiomXa

ENTERPRISE SECURITY MANAGEMENT SYSTEM



**RBH**  
ACCESS

Building Security Worldwide





Bringing together different aspects of security management can be challenging. Axiom stands up to the challenge by combining Access Control and Alarm Monitoring with Video, Building management automation, Asset tracking, Guard tour and Visitor management, and many more important security functions into an elegant and versatile security management solution.

Harnessing the power of the Microsoft SQL Server™ and powerful MS .NET™ framework, Axiom is positioned on the cutting edge of the modern security technology. Adding new applications and solutions is easy due to the flexibility of the underlying software and hardware platform.

Solid architecture and highly customizable, flexible user interface provides powerful tools for Enterprise Security management. Robust and highly sophisticated hardware implements a variety of flexible solutions at a firmware level. Designed and manufactured "in house", Axiom offers unmatched longevity and will ensure a long life span for a security investment. Axiom provides a sophisticated yet affordable solution for systems of all sizes.



- Access Control
- Alarm Monitoring
- Video Integration
- Building Automation
- Asset Tracking
- Guard Tour
- Dynamic Mapping
- Visitor Management
- Parking
- Time & Attendance
- Physical Identity and Access Management
- Advanced Biometrics
- Wireless Locks
- Mobile Apps
- EBAR
- API Available
- and more...



## Video Management

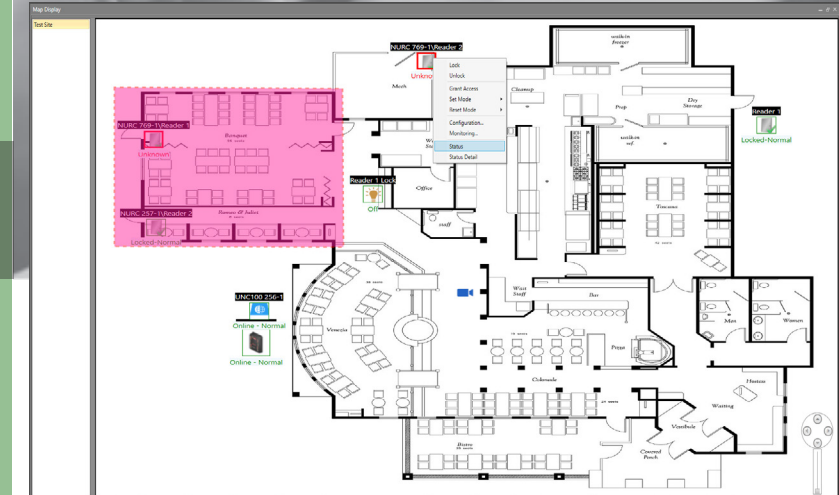
The Axiom system provides direct access to DVR features from the System Status screen, Event Log display, Interactive Maps, and History Report module.



- History event viewing
- Live video on screen
- TCP/IP connections
- Report integration
- Pre, post event viewing
- Supports multiple makes
- Control PTZ on-screen
- Call/Shot assignment

## Dynamic Mapping

Complete with manual or automatic display on alarm, mapping is enhanced by direct and full access to all control and configuration functionality, integration with live and event video for each device.



- Manual or auto display on alarm
- Direct Access to Control and Configure
- Integration with live event and video



## Interactive Guard Tour

To verify a door's operation, presence of people in the area, or various other issues that can be out of normal order, a patrolling security officer is needed to make sure that these inspections are performed on time and in proper order.



- Real-time operation
- Live progress display
- Uses existing readers at access points
- Start tours manually or by schedules

## Integrated Wireless Lock Support

As an accent to a hard wired solution or a total deployment of wireless lock technology Axiom interfaces with multiple brands of wireless locks simultaneously. This flexibility allows the right wireless lock to be used for the right application! Axiom provides complete monitoring of the wireless locks and all trouble conditions. Multiple modes of operation are offered depending on the wireless locks ability such as Dormitory and Privacy functions.





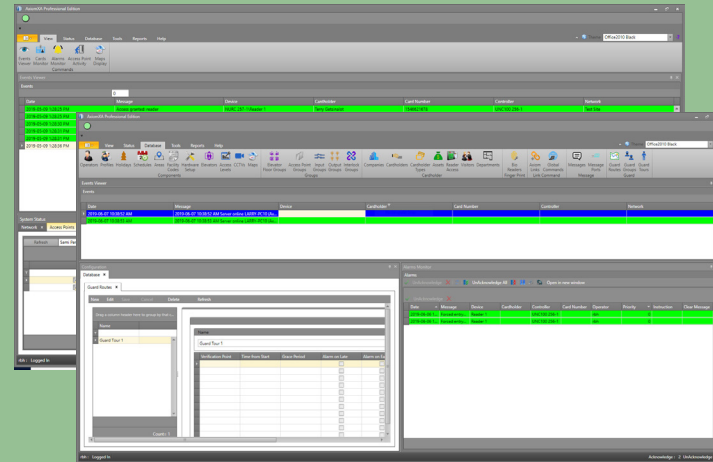
## Asset Tracking

To prevent theft of your organization's assets or to keep track of their current location, our Integrated Asset Tracking system is designed to help stop persons leaving with valuables they are not authorized to remove from the premises or move them to another part of your facility. Axiom will link individual assets with their owners and with pictures of both the protected valuables and their assigned owners.



## Integrated Security Alarms

An extremely large number of unique alarm points can be monitored by an Axiom system. Each point can be fully configured for type of annunciation, priority, customizable action messages, ASCII output, CCTV trigger and executable links. Live graphic maps and color coded alarm handling instructions guide operators an efficient response to each alarm.

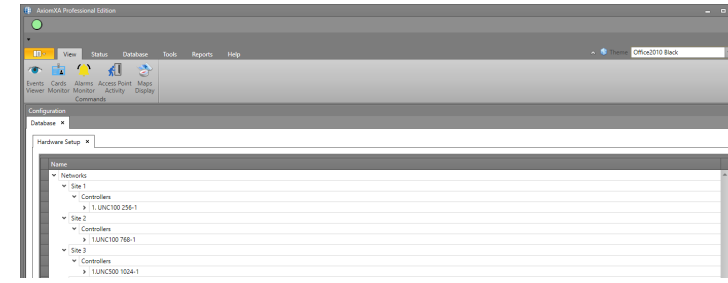


## Multi-Site Control

An unlimited number of sites can be created and deployed and controlled by one Axiom System. Ideal for large corporations that span many countries and require central management.



- Database Partitioning
- Multiple Servers
- Remote Sites



## Mustering/Evacuation Reporting

The current location of cardholders, area occupancy counts and lists can be easily accessed. Quickly set or reset anti-passback for areas and cardholders. Configure the automatic printing of the Evacuation Reports.



## Integrated Biometric Support

Multiple brands of biometric readers are integrated with Axiom. A variety of biometric technologies are supported: fingerprint, iris, palm etc. Using a combination of TCP/IP and Wiegand connections allows to integrate virtually any upcoming or established biometric technology.



Palm Reader      Fingerprint Reader      IRIS Reader

- Fully integrated
- Multiple Technologies
- USB enrollment readers
- TCP/IP and Wiegand

## Hot Standby

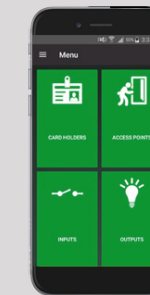
For mission critical applications like Correctional Facilities, Museums, and Airports, Axiom has a Hot Standby option so that critical operations such as alarm monitoring can be performed in the event of server failure. The Hot Standby option is configured to constantly monitor the 'primary' server and automatically fail over and assume command of the systems operations in the event of failure.



## Browser and Mobile Support

Configuring the Web Server on the Axiom system will allow operators to control and administer the security system via a web browser from any operating system.

- Edit cards, schedules, access levels
- Monitor and control doors, alarm points and relay outputs
- Run database and activity reports
- Use any browser



## Photo ID Badging

Our Photo ID module provides an easy to use and powerful tool for creating high quality, dual sided personalized credentials.



- USB, WIA-based cameras
- Windows Printer support
- Dual-sided Cards
- Multiple Templates

## Car Park Management System-CMS

Multiple use parking lots can be a problem to manage but not with Axiom CMS. This module keeps track of each company's vehicles and restricts the number allowed into the parking lot per company. This software module can be added to any existing Axiom system and uses the standard access control reader hardware already deployed, so there is no added hardware to install.



## Elevator Control

Axiom can communicate with elevator controller via programmable ASCII or input/output interface. Architecture employed makes it easy to add visitor access functionality to existing systems. Permissions are easily configured in "Access Level" screen.



## Interoperability

- Active Directory
- ASCII Interface
- API Available
- Message Port
- XML
- OSDP



Learn more at [RBH-Access.com](http://RBH-Access.com)





The blueLINE™ series of credential readers combines proven technologies of the past with the emerging technologies of today. Through one product line a customer can maximize the benefits of all credentials complying to ISO-14443 A & B, MiFARE, DESFire (EV1 & EV2), Fingerprint, OSDP version 1 & 2, Ultra-High Security Credentials (UHSC), Mobile Credentials, NFC and Bluetooth to create a customizable security solution that's right for their infrastructure. blueLINE™ has an ergonomic, aesthetically pleasing design that fits all solutions from the smallest user to the largest corporation. blueLINE™ reads up to 128 bit cards.

The blueLINE™ series of readers are ergonomically designed with tri-colored LED's and backlighting for dim environments. Single gang, mullion, and European box sizes are available. See your dealer for a complete parts list.

The RBH-BFR350 series is a biometric reader designed and completely integrated into all of RBH security software platforms for quick and easy biometric enrollment. For fingerprint only or credential and fingerprint validation the BFR series is right for any application.

Readers in the blueLINE™ series are capable of using DESFire (EV1 & EV2) credentials for the highest of security standards. Communication to controllers can be using standard Wiegand or OSDP version 1 & 2 for increased security where maximum integrity and tamper conditions are required.

Introducing UHSC or Ultra High Security Credentials. All blueLINE™ readers use UHSC via NFC or Bluetooth on respective devices. UHSC are a free virtual credential for Android and IOS where the App creates a virtual credential on the device. A Manufacturer does NOT manufacture or track your credential. This removes the possibility of a virtual credential hack or duplication of virtual credential. End users are not dependent on manufacturers shipping or managing credentials making UHSC a much higher form of security and at the same time extremely economical.

#### RBH blueLINE™ Features:

- Metal mount readers
- Ergonomic design
- Backlit keypads
- Tri-color LED indication
- OSDP (version 1 & 2)
- Wiegand up to 128 bit
- FREE virtual credentials (UHSC)



#### RBH blueLINE™ Technologies:

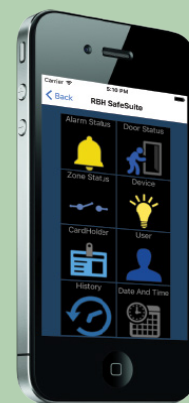
- All credentials complying to ISO-14443 A & B
- Mifare (13.56 MHz)
- Desfire (EV1 & EV2) (13.56 MHz)
- NFC
- Bluetooth
- Fingerprint
- UHSC virtual credentials



# SafeSuite™

## Hybrid Access and Alarm System

Packed with features such as built in Access Control, PoE Plus, Email notification, SMS notification, the SafeSuite Series now defines the new standard in the Security industry.



- Can be a complete standalone solution
- Built-in wireless receiver
- Browser interface
- Built-In access control
- Alarm control point
- PoE+
- Live location status, owner and asset image display
- Easy to retrofit - multiple reader brands supported
- 256 zones
- Mobile app for on the go control



## Electronic Building Access Request - EBAR

Gives ownership of the Access Control system doors to one or more personnel allowing them to manage their own cardholders from the companies Intranet.

#### Features:

- Authorization accountability
- Reduces Liability
- Full logging audit trail
- Work load distribution
- Customizable to fit your companies Intranet



## Visitor Management

Security requirements of large organizations and facilities are always challenging, visitors must be screened, registered and signed in quickly in some cases with restricted access which is all possible using RBH's Visitor Management System.

#### Features:

- Faster throughput of visitors at reception
- Tablet based for security and front desk
- Online visitors reports
- For corporate/ residential / schools
- For multiple locations / units
- Manage and track visitors throughout facilities



Learn more at [RBH-Access.com](http://RBH-Access.com)

Edition	AxiomXa Professional	AxiomXa Enterprise
Data Storage	MS SQL Express Edition	MS SQL Server (Not Included)
Automated SQL Server Installation	Yes	No
Access Points Supported	256	512, 1024, 2048 ... Unlimited
Networks per Comm. Server	50	128 (256**)
Clients (Included)	5 (5)	Unlimited* (10)
Server components on multiple PCs	No	Yes
Dynamic Mapping	Yes	Yes
Hot Stand-by	No	Yes*
Automatic "Fail-over"	No	Yes*
Load Management	No	Yes*
Active Directory Interface	No	Yes*
High Availability Communications	Yes*	Yes*
Data Import/ Export Wizard	Yes*	Yes*
Interactive Guard Tour	Yes*	Yes*
Asset Management	Yes*	Yes*
Asset Tracking	Yes*	Yes*
Asset/Person Location	Yes*	Yes*
Badging PhotoID and Design	Yes*	Yes*
OSDP Support	Yes*	Yes*
VMS / DVR / NVR Integration Module	Yes*	Yes*
Custom Report Designer	No	Yes*
Automatic Report Generation	Yes*	Yes*
Visitor Management	Yes*	Yes*
Integrated Biometric Fingerprint Enrollment	Yes*	Yes*
Wireless Lockset Integration	Yes*	Yes*
API Available	Yes*	Yes*
Multi Language	Yes	Yes
Destination Elevator Integration Module	Yes*	Yes*

\*Available option \*\* Ask your representative for details

Our unified hardware platform is field configurable to work with any RBH software platform.

- Award Winning Technologies
- Rackmount Options
- Ultra-Low Power Consumption
- Multiple Form Factors Available



- Native IP
- PoE Versions Available
- Battery Charging over PoE

PROXIMITY

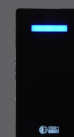
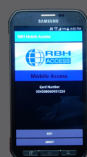
iCLASS

VIRTUAL



MIFARE

BIOMETRIC



Learn more at [RBH-Access.com](http://RBH-Access.com)